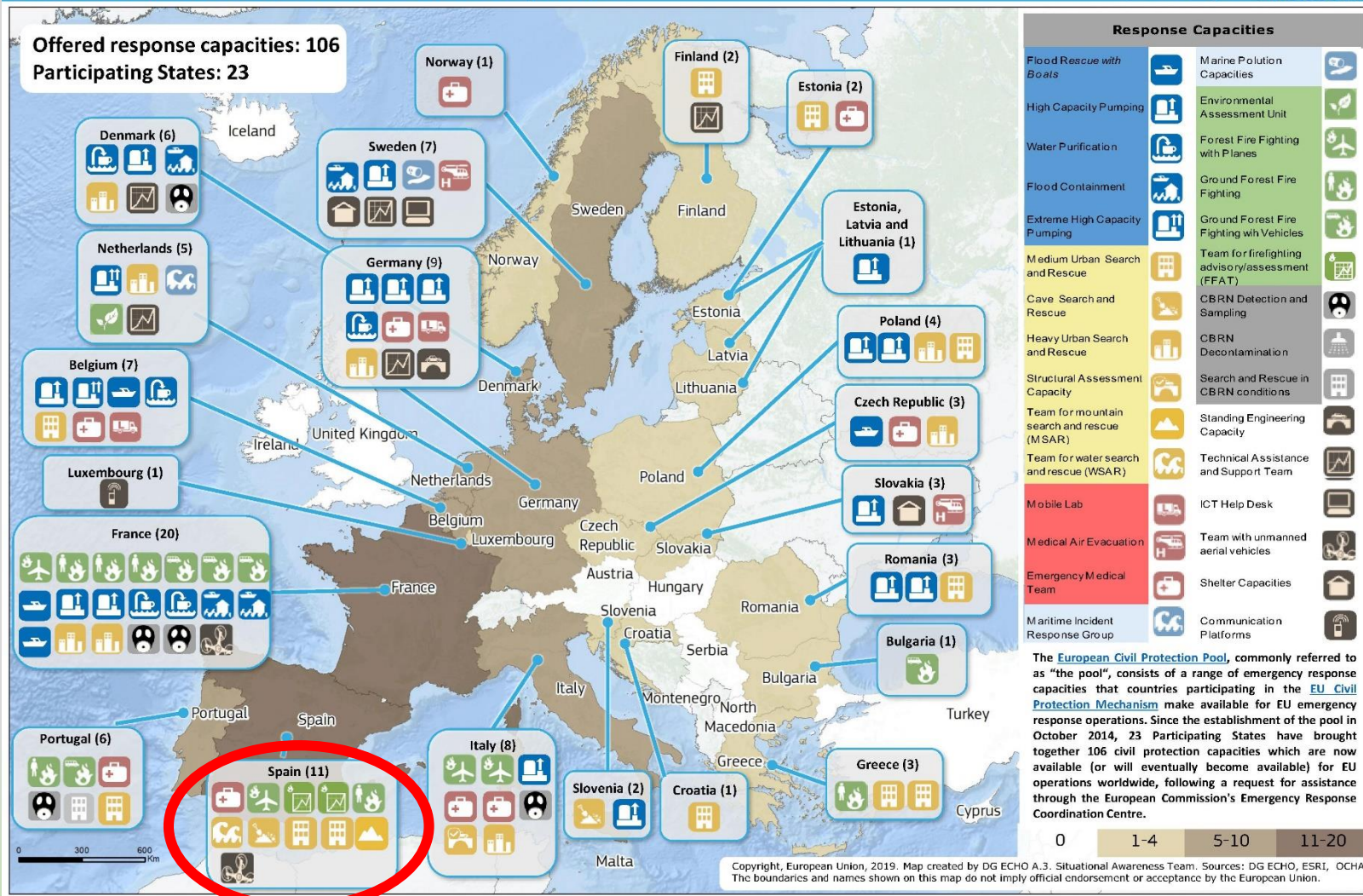


# FOREST FIRES ASSESSMENT AND ADVISORY TEAM

*A jointly integrated approach for  
efficiency and solidarity*



Emergency Response Coordination Centre – DG ECHO Daily Map – 21/08/2019  
European Civil Protection Pool - Offered capacities



## EUROPEAN CIVIL PROTECTION MECHANISM

- 1<sup>st</sup> Wildfire response mission outside Europe in Chile 2017
- Chile mission → 5 Spanish experts
- February 2018 → FAST was declared as a wildfire capacity in the UCPM
- October 2019 → FAST is self-sufficient (financial and logistics)

# AGENCIES INVOLVED

## INTERNATIONAL LEVEL

### EUROPEAN UNION



### COUNTRIES

## EUROPEAN LEVEL

### EMERGENCY RESPONSE COORDINATION CENTER (ERRC)

### COUNTRIES FOCAL POINTS

## SPANISH LEVEL

### MINISTRY OF INTERIOR



### MINISTRY OF AGRICULTURE FISHERIES AND FOOD



### REGIONAL GOVERNMENTS





## MAIN ROLE (SOP)

Support the requesting country in:

### → **ASSESMENT MISSION**

*A specific on-going forest fire emergency.*

### → **ADVISORY MISSION**

*To exchange knowledge and expertise on specific topics of the requesting country interest (not only suppression but also risk awareness, prevention policies and training, among other areas).*



## AREAS OF EXPERTISE (SOP)



**SCALABLE AND FLEXIBLE**

**Applicable standards : Incident Command System (ICS)**

## TEAM COMPOSITION (SOP)

### → ASSESMENT MISSION

- Up to 12 experts - 2 teams – 24 h

### → ADVISORY MISSION

- Depends on Terms Of Reference





# EXPERTS DATABASE

Currently...

**102 experts**

From 10 regional governments  
+ independent experts

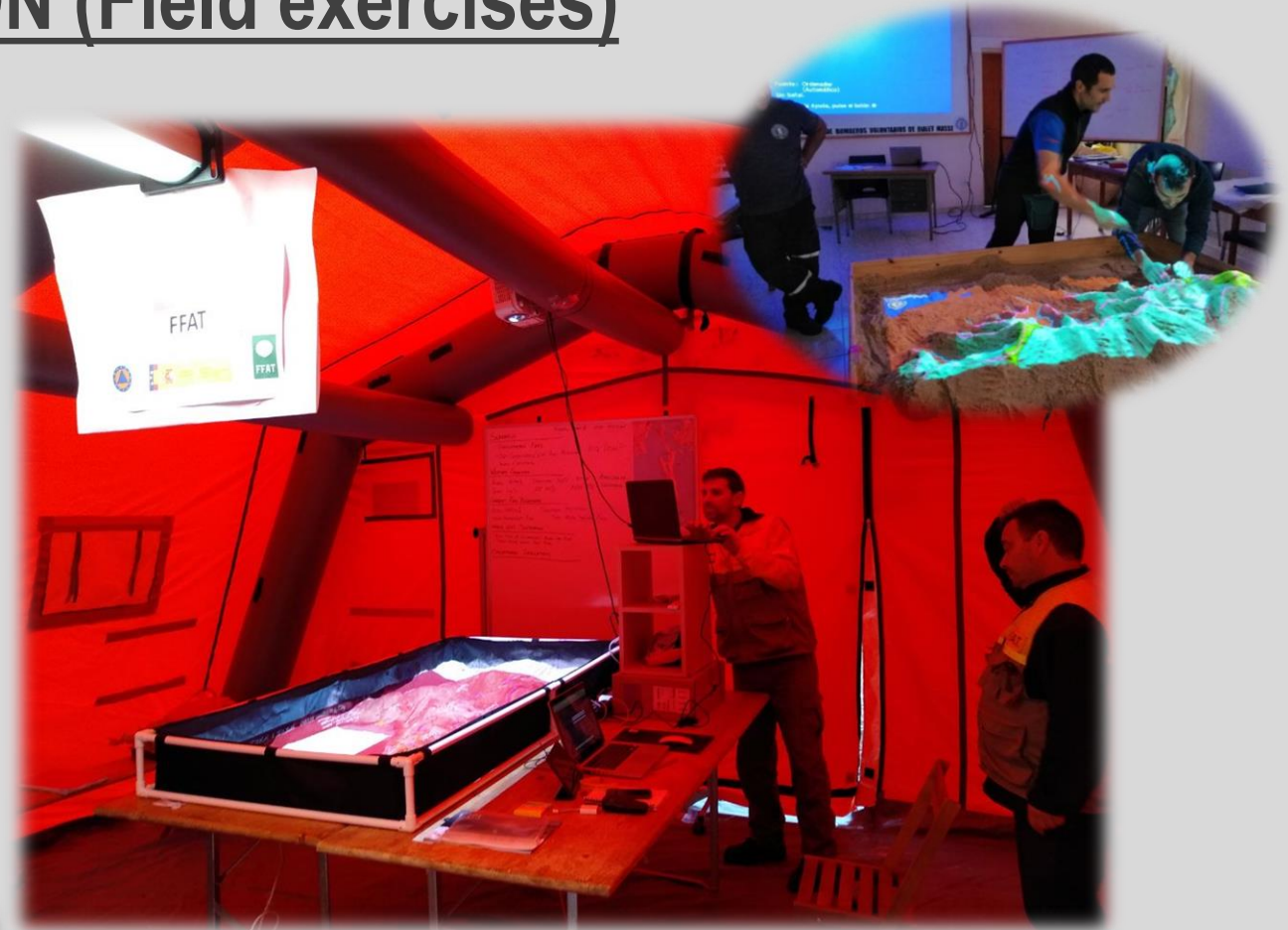


And growing !

## FAST IN ACTION (Field exercises)



**COOPERATION WITH  
OTHER TEAMS**



**USING TECHNOLOGICAL SUPPORT TOOLS**



## PROVIDING ASSISTANCE IN DECISION-MAKING

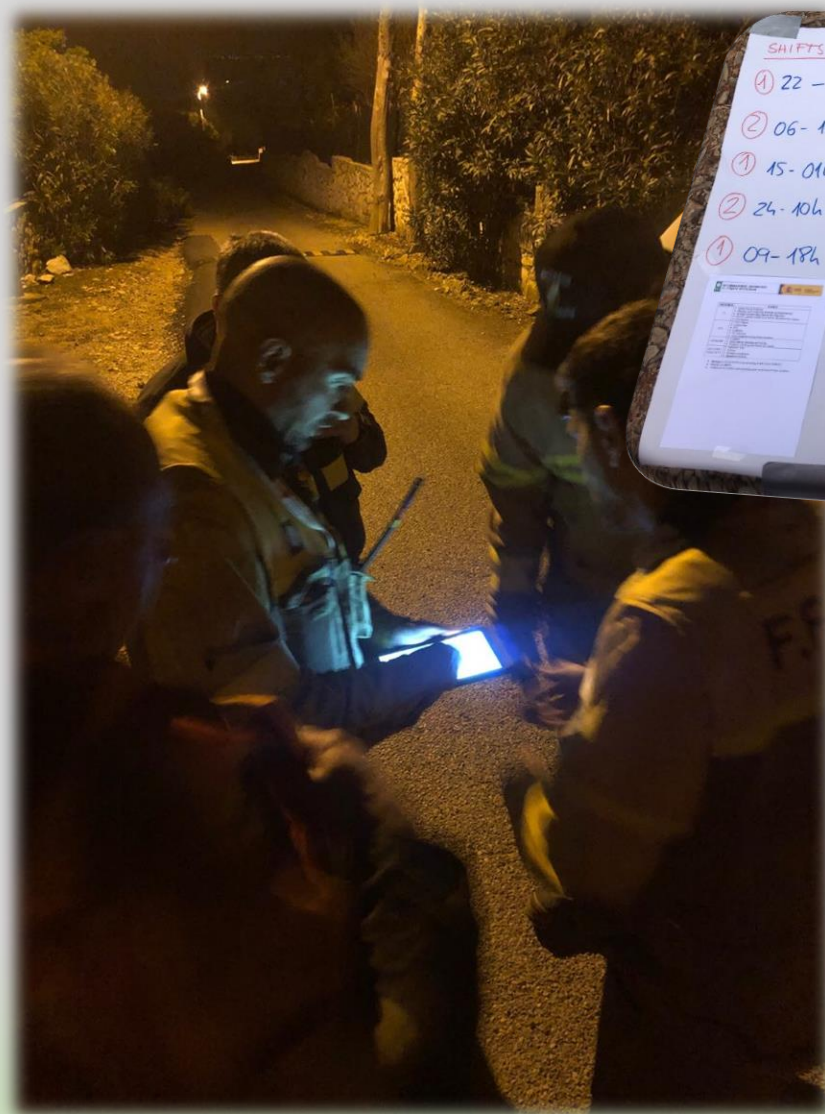


## TEAM BUILDING





## 24 HOURS SUPPORT



SHIFTS FFAT		
① 22 - 07h		TL Rodrigo
		DTL Ce'sar
② 06 - 16h	①	OP Victor
		AN Marta
① 15 - 01h		AN Fernando
② 24 - 10h		TL Ángel
		DTL Carmen
① 09 - 18h	②	OP Alberto
		AN Juan
		AN Marc



## ANALYSIS OF THE CURRENT AND EXPECTED SITUATION

## OBJECTIVES IN ASSESSMENT MISSIONS

- **CLARIFY CURRENT AND FUTURE WILDFIRE SCENARIO**
- **REDUCE UNCERTAINTY**
- **PROVIDE OPERATIONAL AND SAFETY RECOMMENDATIONS**
- **SPREAD ANALYSIS PRODUCTS (BULLETIN AND MAPS) TO:  
LEMA, IC, OTHER TEAMS IN THE FIELD...**

**“INTELLIGENCE CELL”**



# INTERNATIONAL MISSIONS OF OUR EXPERTS

2017



Assessment  
CHILE

2018



Advisory  
PORTUGAL

2019



Assessment  
GUATEMALA



Advisory  
BOSNIA & HERZEGOVINA



Assessment  
BOLIVIA

**SHARE OF KNOWLEDGE AND EXPERTISE**

**LEARN!**

# THIS WILL ALLOW US... (at national level)

DEVELOP AND TRAIN **INCIDENT MANAGEMENT TEAMS**

## HOW?

NATIONAL WILDFIRE **PREPAREDNESS** PROGRAMME

1. EXERCISES

2. EXCHANGE OF EXPERTS



3. FAST MISSIONS





# THANKS FOR YOUR ATTENTION

Authors:

Elena Hernández Paredes (Ministry of Agriculture , Fisheries and Food (Spain))

[ehparedes@mapa.es](mailto:ehparedes@mapa.es)

Ángela Iglesias Rodrigo (Ministry of Agriculture , Fisheries and Food (Spain))

[aiglesias@mapa.es](mailto:aiglesias@mapa.es)

Camino Rodero Merino (TRAGSA)

[at\\_ccinif1@mapa.es](mailto:at_ccinif1@mapa.es)